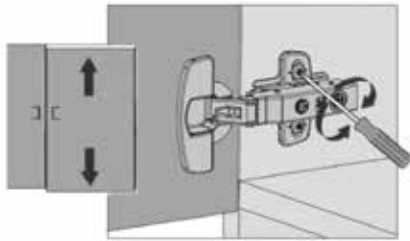
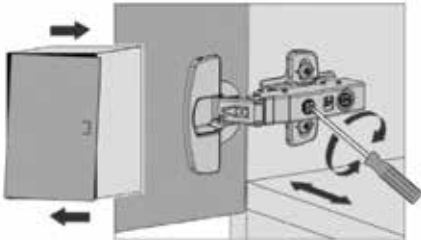


DOOR ADJUSTMENT



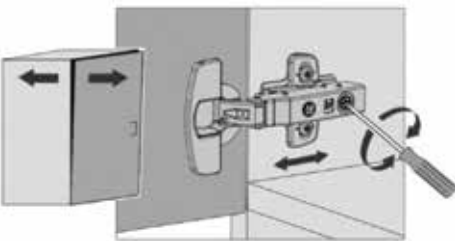
HINGE HEIGHT ADJUSTMENT

- loosen screw
- move door up or down as required
- tighten screw



HINGE SIDE ADJUSTMENT

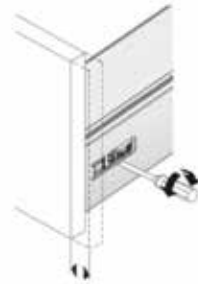
- turn screw clockwise to move left
- turn screw counterclockwise to move right



HINGE DEPTH ADJUSTMENT

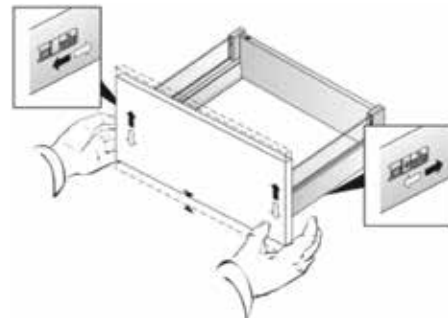
- turn screw clockwise or counterclockwise to move inward or outward

DRAWER ADJUSTMENT



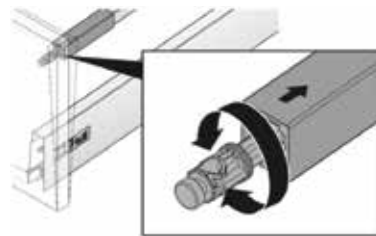
DRAWER FRONT SIDE ADJUSTMENT

- turn screw clockwise or counterclockwise to move left or right



DRAWER FRONT HEIGHT ADJUSTMENT

- turn wheel forward or backward to move up or down



DRAWER FRONT TILT ADJUSTMENT

- gallery rail only: turn gallery rail clockwise or counterclockwise to adjust drawer front tilt

*These instructions apply to our standard products.



Congratulations on receiving your new AyA kitchen. Here you will find important information regarding the care, maintenance and warranty of our products.



**WARRANTY
AND CARE**
www.AyAkitchens.com

Every species of wood has characteristics unique to the tree from which it came. Natural graining, colour and texture variations define the beauty of natural wood products. At AyA we strive to obtain the most consistent grain and coloration available for each species yet due to uniqueness inherent in any wood product, AyA cannot be responsible for the natural variations that may characterize your cabinet selection.

OAK has been a popular choice in cabinet construction for a number of years due to the durability of its moisture resistant wood. Characterized by open graining, red oak has a natural range of color from light to dark and mineral deposits within the grain increases its natural beauty.

MAPLE is a hard, tightly grained wood that can have colour variations from a pale white to a reddish tone. The finish that is chosen for maple can enhance its natural beauty, or subtly reduce the variations through the use of darker stains.

CHERRY is widely renowned for its traditional majesty. A softer hardwood, cherry has a subtle grain, enhanced with pitting which lends itself to the warmth of historical settings. The tone of Cherry can range from a blonde to red appearance. The richness of Cherry is enhanced as it naturally darkens over time.

WALNUT is a wood species with a fine intricate grain pattern and variable colour tones. The beauty of Walnut lies in the natural randomness of the grain pattern and colour variations, which will lighten with age. As the range of Walnut grain and colouring can be highly variable, customers unwilling to accept these variations should choose more traditional wood species.

PAINTED WOOD is a high end cabinet choice. The luxurious opaque paint finishes allow for seamless colour and highlight the natural characteristics of the wood. Due to the natural process of expansion and contraction of wood in a home, painted doors may over time gain character with hairline paint cracks on corner joints.

PAINTED MDF is medium density fiberboard which can be painted any of the same colours as painted wood. MDF doors are not as susceptible to expansion and contraction as doors that are made of one piece.

GLAZING is a process of adding a secondary colour over the primary paint or finish of a cabinet door to accentuate details. Glazing is a hand finish which adds the extra touch of not only having an extra detail with the glaze but also the natural beauty and old world craftsmanship of a handmade product.

CABINERY TIPS

AVOID EXCESS MOISTURE

- quickly clean any spills or standing liquid as this may cause damage to cabinetry
- do not use electric kettles underneath upper cabinetry
- do not drape wet cloths or dishtowels over cabinetry

AVOID EXCESS SUNLIGHT EXPOSURE

- direct sunlight has negative effects on cabinetry finishes over time, changing the original colour
- consider window treatments such as blinds or drapes to protect cabinetry from sunlight exposure

ALL CABINET DOORS REQUIRE CLEANING ON A REGULAR BASIS

- Do not use ammonia or ammonia based cleaner
- Do not use harsh abrasives such as steel wool, scouring pads or detergents
- Cleaning agents should be applied to a cloth, not directly sprayed or applied to cabinetry
- Any cleaning agent used should be removed immediately followed by a light rinse with a water dampened cloth, and then dried with a lint free cloth

WOOD DOORS

- recommended cleaner is mild soap and water using a non-abrasive cloth
- dry water off immediately using a lint free cloth
- more difficult stains can be removed by using a white vinegar and water mix
- do not use furniture polish or wax as the wax build up will mar the finish

PAINTED DOORS

- recommended cleaning is wiping lightly with a water dampened cloth
- dry water off immediately using a lint free cloth
- more difficult stains can be removed by using a white vinegar and water mix

THERMOFOIL, PET & LAMINATE DOORS

- recommended cleaning is wiping with a water dampened cloth
- more difficult stains can be removed by using mild soap or a white vinegar and water mix

AyA Kitchens and Baths, Ltd. (AyA) provides a "Limited Life-time Warranty" on our products. The warranty on drawer glides and hinges is for the life-time of the kitchen. AyA also provides a 5 year warranty on the cabinet construction, and 2 years on the cabinet doors, finishes and surface hardware (knobs & handles). Countertop material warranty, if installed by AyA, is also extended to homeowner for one year. AyA's warranty is expressly limited to replacing or repairing defective parts at AyA's discretion and covers parts only, and will not extend to labour or features and conditions found inherent in the wood species style or finish attributes (for example, but not limited to joint lines revealed due to expansion and contraction of wood doors, painted finishes and stains). All dates are from date of installation.

This warranty is only valid if cabinetry is installed by AyA or an authorized AyA dealer and only to the original purchaser of the cabinets at the original site of installation and is not transferable. This warranty is in lieu of any and all other warranties, expressed or implied by AyA, AyA Associates and/or others and is only valid in Canada and in the United States of America.

This warranty is applicable only in climate controlled residential applications (relative humidity 35-55% and temperatures range to 17-24°C). This warranty shall become void if the cabinets are damaged by misuse, abuse, negligence, alterations, acts of God, improper installation or handling and storage of our cabinetry by others.

AyA reserves the right to alter product design, specifications and materials without prior notification or obligation to incorporate such changes to products previously manufactured.